

Industrial Land

Monroe NC

Airport Industrial Potential



LAND

Site

- ◆ **398 +/- acres**
- ◆ **Adjacent to the Monroe Airport**
- ◆ **Airport Access with Hanger potential**
- ◆ **Flat topo**
- ◆ **County Utilities**
- ◆ **City Utilities**
- ◆ **Zoning:**
 - ◇ **Heavy Industrial**
 - ◇ **Light Industrial**
- ◆ **Can be subdivided**

Demographics

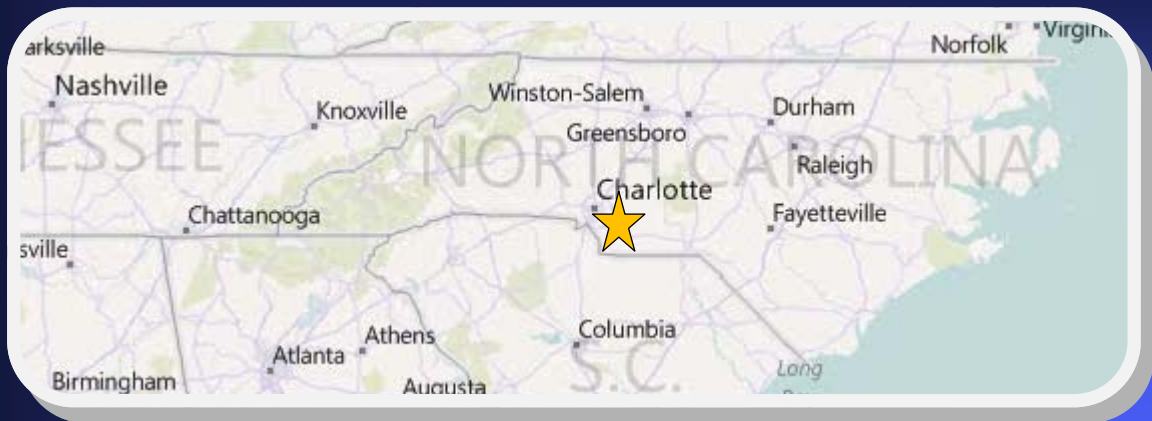
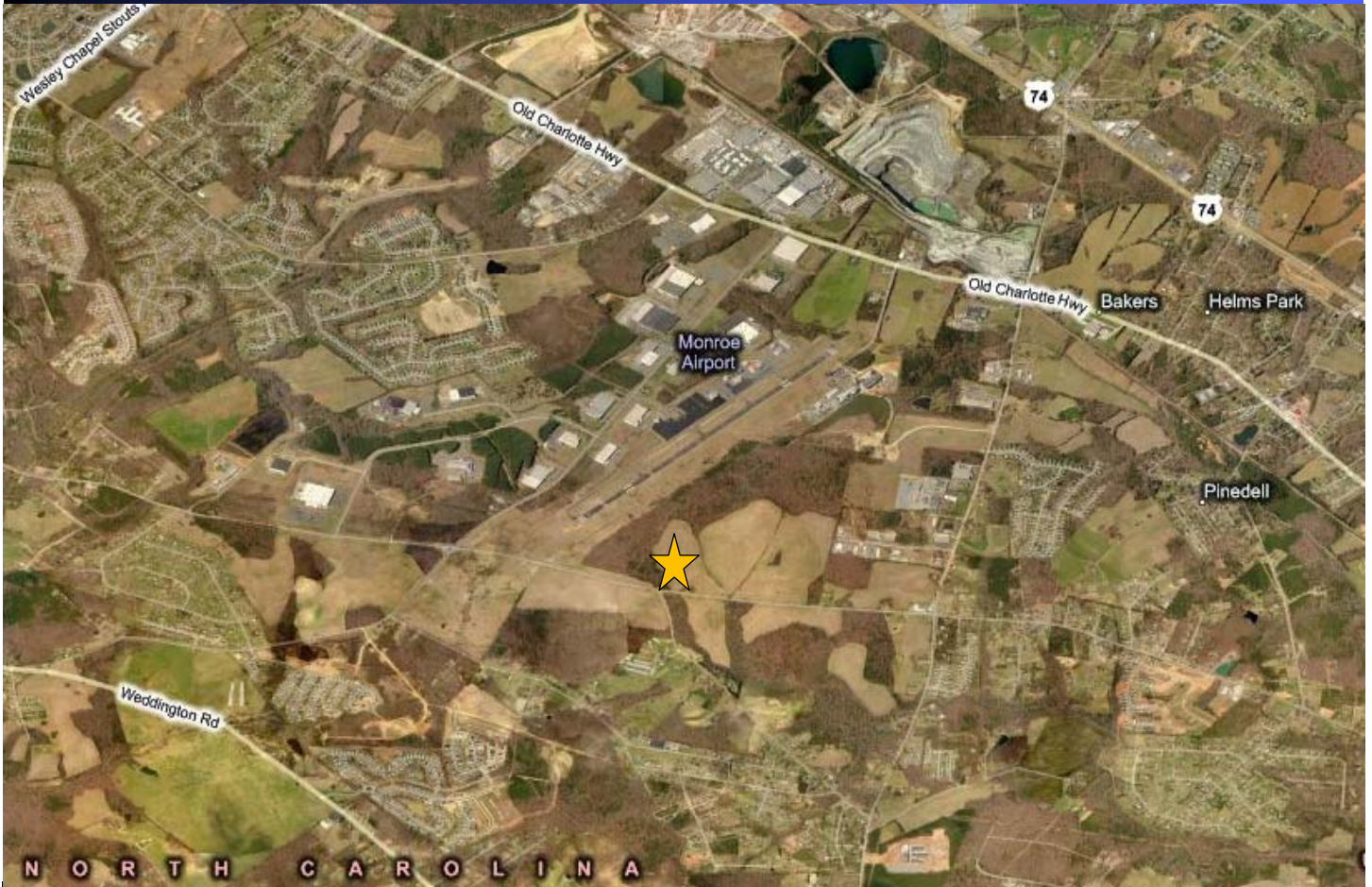
1 mile ~ 244
 5 mile ~ 64,058
 10 mile ~ 214,621

**Union County North Carolina-Industrial Land
 located next to an Airport. Hanger potential
 Great Distribution or manufacturing location**



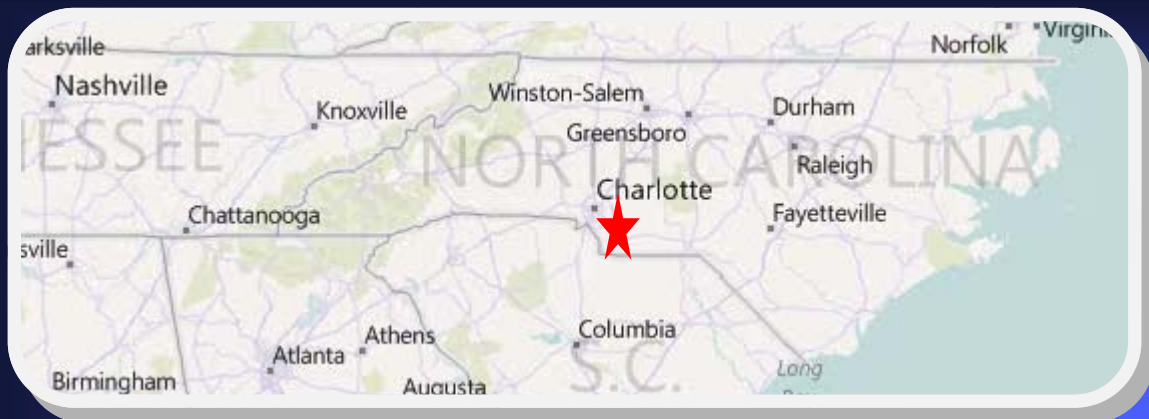
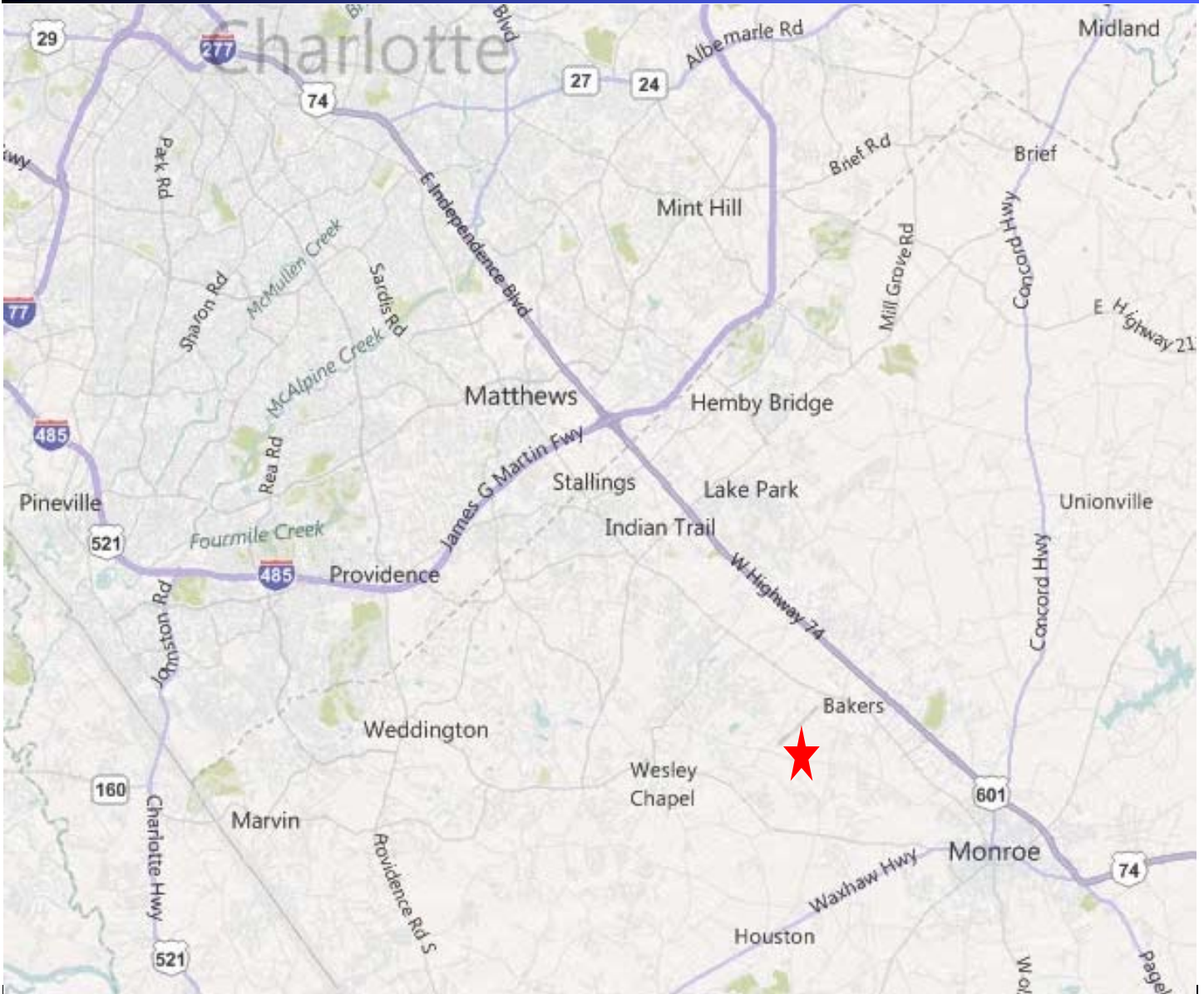
Contact
 Carlton Tyson
 704-361-9006
 Carlton@Typarrealty.com

Aerial

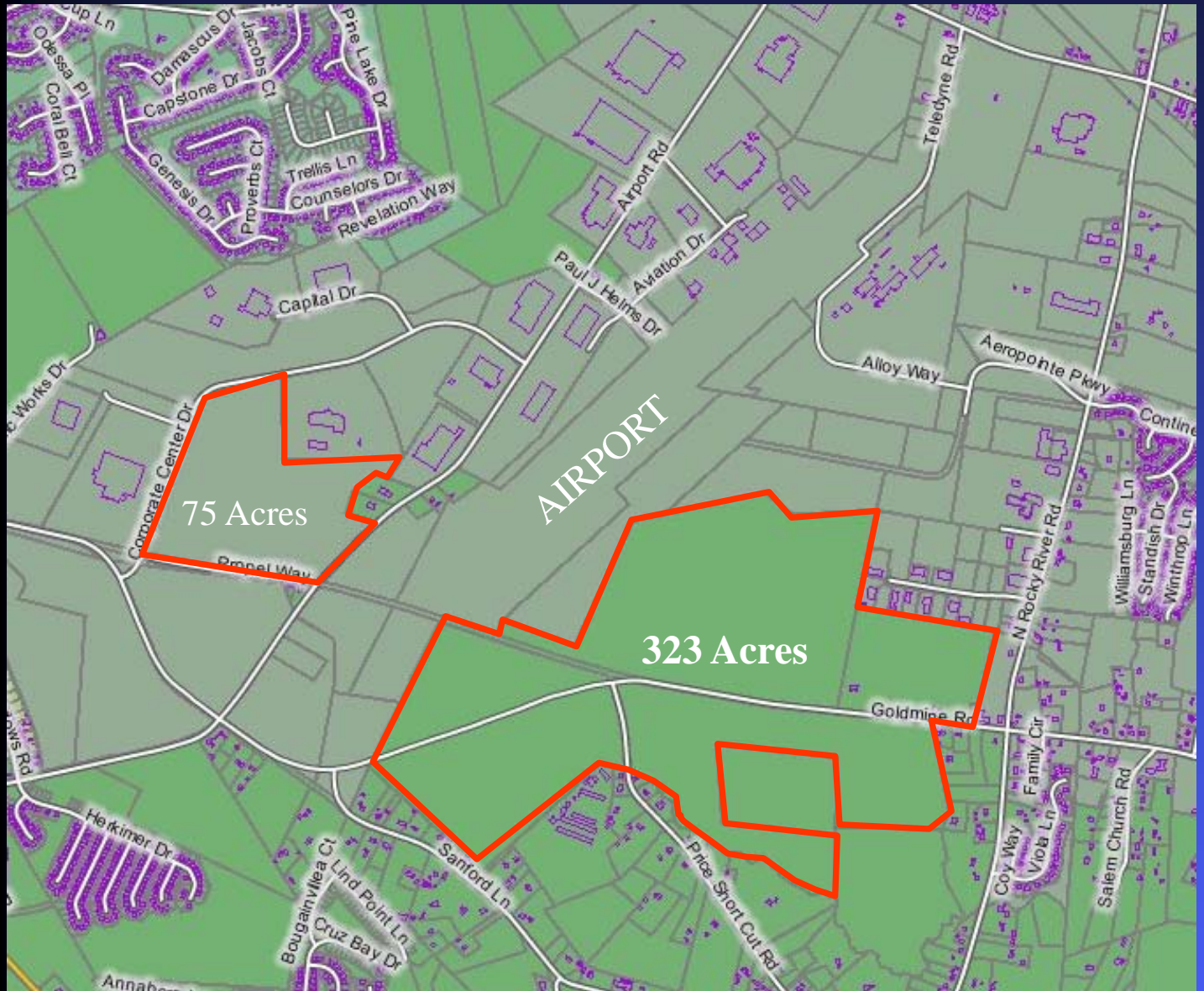


35.010948,-80.622139 Coordinates

Locator Map



GIS



Tax Parcel #'s

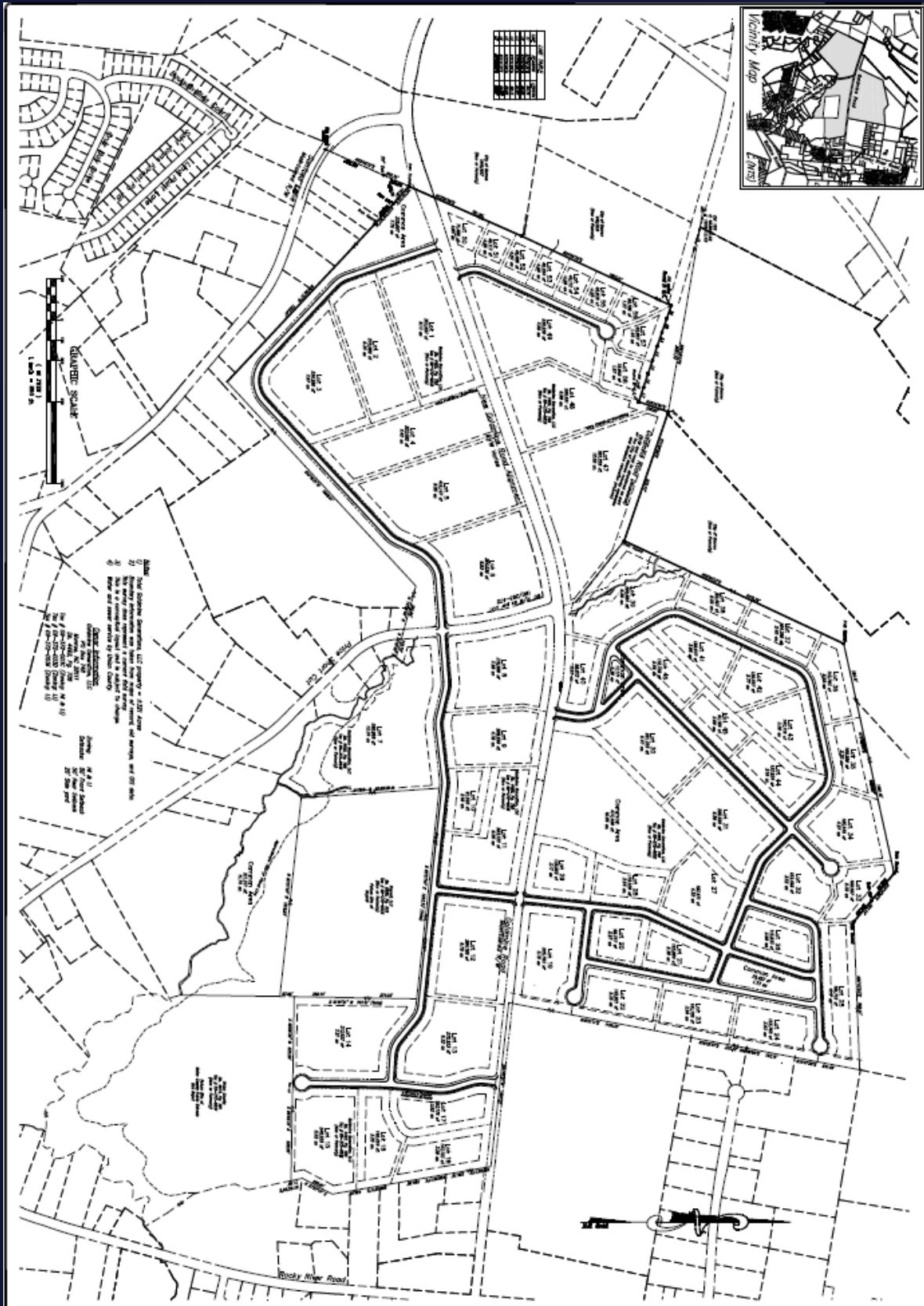
129.5 acres—09372003C

100.92 acres—09372003D

92.6 acres—09372003E

75 acres—09399002G

Potential Site Plan



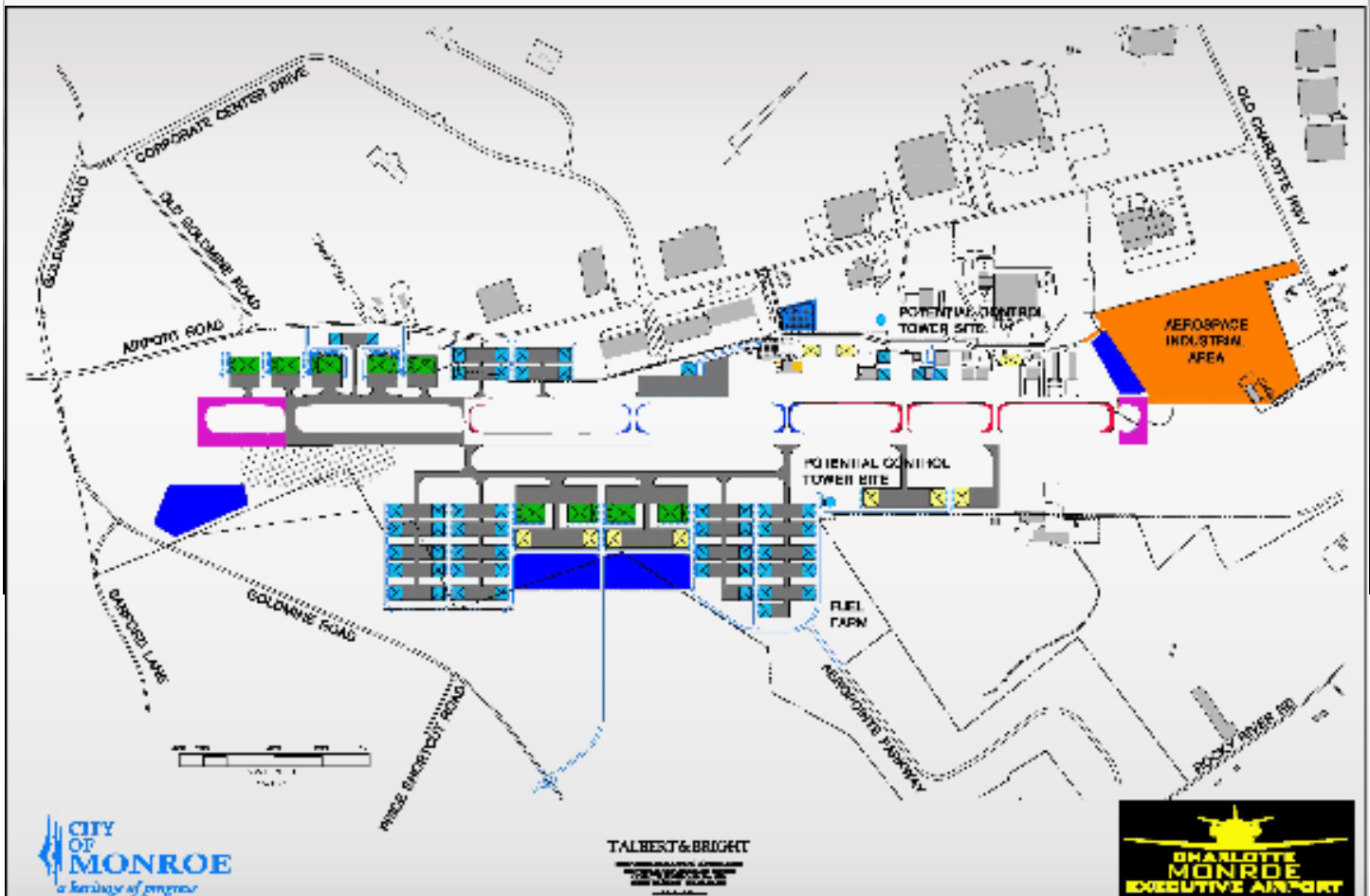
AIRPORT INFO

Charlotte-Monroe Executive Airport is the primary reliever for Charlotte-Douglas International. With a 7,000 foot runway, we can handle virtually any corporate aircraft.

The City of Monroe has developed and operates the airport with a mandate of providing the highest quality of customer service.

Our professional staff is very experienced handling all types of aircraft. We provide quick turnarounds and a complete level of line services. We also have extremely affordable full-service and self-service fuels.

Come visit and enjoy our executive terminal and great customer service.



<http://www.charlottemonroearport.com/>

3900 PAUL J. HELMS DRIVE, MONROE, NC 28110 - (704) 226-2300